

Parkheath

Sold on Service

Mostyn Gardens NW10

£4,400 PCM (£1,015 per week) - Brent Band E



Mid-terraced three-bedroom period house

New carpets and newly fitted kitchen

Separate dining room

Three generous double bedrooms

Moments from Chamberlayne Road amenities and transport links

Recently redecorated throughout

Bright reception room with bay window

Spacious kitchen/diner opening onto the garden

Family bathroom plus downstairs shower room

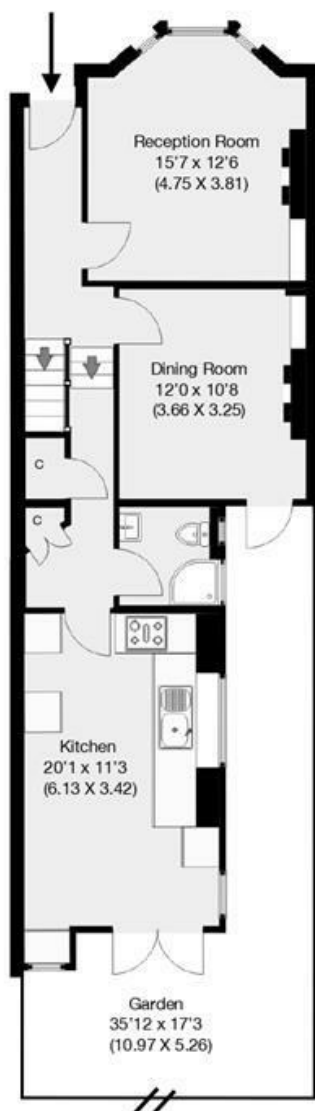
EPC: Rating D, Council Tax: Brent, Band E

Kensal Rise Office 0208 960 4845



Mostyn Gardens, Kensal Rise, London, NW10

Approximate Gross Internal Area 124.43sqm / 1339 sqft



Ground Floor



First Floor

THIS FLOOR PLAN IS PRODUCED FOR PARKHEATH SUBMITTED BY ARCHIMEDIA web: www.archi-media.co.uk

Whilst every attempt has been made to ensure the accuracy of the floor plan contained here, measurements of doors, windows and rooms are approximate and no responsibility is taken for any error, omission or misstatement. These plans are for representation purposes only and should be used as such by any prospective buyer or lease. Specifically no guarantee is given on the gross internal floor area of the property if quoted on this plan and any figures given is initial guidance only and should be treated as such.

The particulars do not constitute part of an offer or contract. The particulars, including text, photographs and plans, are for the guidance only of prospective purchasers/tenants and must not be relied upon as statements of fact. The descriptions provided therein represent the opinion of the author and whilst given in good faith should not be construed as statements of fact. Nothing in these particulars shall be deemed a statement that the property is in good condition or otherwise or that any services or facilities are in good working order. All measurements are approximate